

CHOOSING A LICENCE

THIRTY DAY EXPLORER

This gives you up to thirty days use of all our Waterways in England and Wales at any time within twelve months of issue date – the days do not need to be consecutive. We provide you with thirty, one-day tickets, which you date and display for each day that your Boat is on our waters.

ONE MONTH, ONE WEEK AND ONE DAY LICENCES

– Canal and River Licence

Allows you to keep and use a Boat on any of our Waterways in England and Wales. Please ask us for details of Scottish licences if you would like to explore Highland and Lowland waterways north of the border.

– Rivers Only Licence

covers the following:

- Avon (Hanham Lock to Bath)
- Bow Back Rivers
- Fossdyke & Witham (Torksey to Boston)
- Lee Navigation (Hertford to Limehouse)
- Limehouse Cut
- Ouse and Ure (Goole to Ripon)
- Severn (Stourport to Gloucester)
- Soar Navigation (Trent Junction to Leicester)
- Stort Navigation
- Tees (Tees Barrage to Low Worsal)
- Trent (Shardlow-Gainsborough, including the Nottingham & Beeston Canal)
- Weaver Navigation (Winsford Bridge to Manchester Ship Canal)

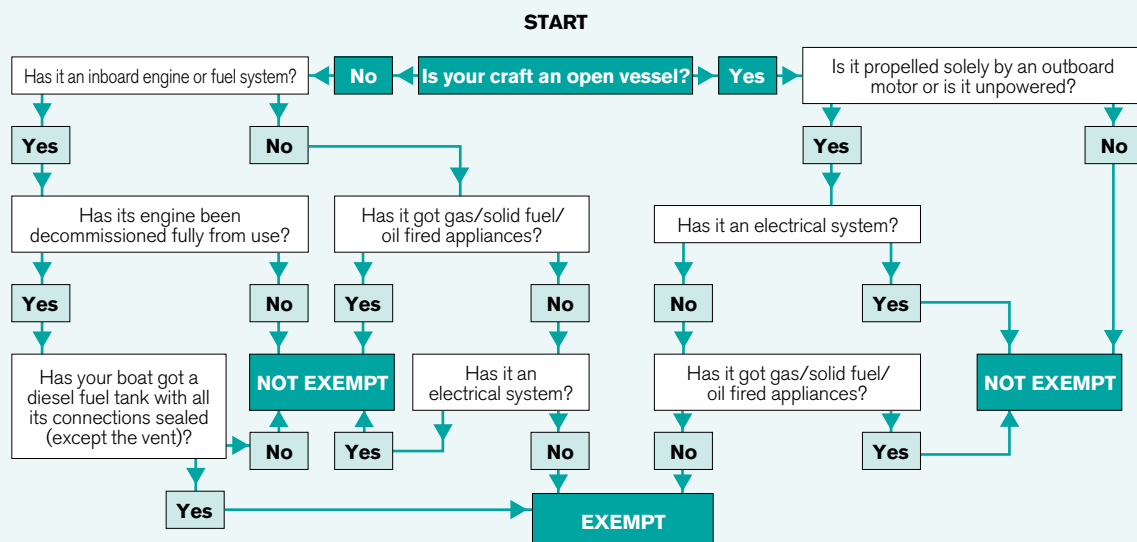
One day and Explorer Licences are not available for craft floating in marinas or moorings connected to BW waters. Short Term Licences do not include free passage through the Anderton Lift, Standedge Tunnel or Ribble Link.

INSURANCE

Your Boat must have insurance that covers at least third party liabilities up to one million pounds.

BOAT SAFETY

Your boat should comply with our safety requirements at all times unless it is a very simple vessel. Check to see whether it is exempt by tracing through the questions on the chart below.



We have the right to refuse access onto our waterways for any boat that we think may present a safety risk to other waterway users. In purchasing a short term licence you agree to allow our employees or an appointed surveyor to carry out a safety check at any reasonable time. If we believe your boat is dangerous, you will have to remove it from the waterway.

To qualify for a licence your boat must have one of the following:

- a current certificate to show compliance with our Boat Safety Scheme requirements
- a current Declaration of Conformity with the EU's Recreational Craft Directive
- We will issue a short term licence without either of the above if you are able to satisfy the conditions contained within the **Boat Condition Declaration** – please complete separate Application Form.

FEES VALID FROM 1 DECEMBER 2008 TO 31 MARCH 2009

Licences may begin on any date. Prices include VAT at 15%. Prices shown are for purchase **in advance**, before you bring the boat onto the waterway, otherwise the price is double the amount shown.

Boat length		Canals and Rivers				Rivers Only		
metres	feet & inches	30 day Explorer	1 month	1 week	1 day	1 month	1 week	1 day
Up to 5.49m	Up to 18' 0"	£74.01	£54.66	£17.07	£10.24	£32.80	£10.24	£6.14
5.50 – 6.49m	18' 1" – 21' 3"	£78.56	£58.07	£18.21	£11.38	£34.84	£10.93	£6.83
6.50 – 7.49m	21' 4" – 24' 7"	£83.11	£62.62	£19.35	£11.38	£37.57	£11.61	£6.83
7.50 – 8.49m	24' 8" – 27' 10"	£87.66	£66.04	£21.63	£12.53	£39.63	£12.98	£7.52
8.50 – 9.49m	27' 11" – 31' 1"	£93.37	£69.45	£22.77	£13.65	£41.67	£13.66	£8.19
9.50 – 10.49m	31' 2" – 34' 5"	£97.92	£74.01	£25.05	£13.65	£44.41	£15.03	£8.19
10.50 – 11.49m	34' 6" – 37' 8"	£103.62	£78.56	£27.32	£14.80	£47.14	£16.39	£8.88
11.50 – 12.49m	37' 9" – 40' 11"	£108.17	£81.97	£28.46	£15.93	£49.18	£17.08	£9.56
12.50 – 13.49m	41' 0" – 44' 3"	£112.72	£85.39	£29.60	£15.93	£51.24	£17.76	£9.56
13.50 – 14.49m	44' 4" – 47' 6"	£118.42	£88.81	£30.73	£17.07	£53.29	£18.44	£10.24
14.50 – 15.49m	47' 7" – 50' 10"	£124.10	£92.23	£31.88	£17.07	£55.34	£19.13	£10.24
15.50 – 16.49m	50' 11" – 54' 1"	£128.66	£95.63	£33.01	£18.21	£57.38	£19.81	£10.93
16.50 – 17.49m	54' 2" – 57' 4"	£133.21	£99.06	£34.16	£19.35	£59.43	£20.49	£11.61
17.50 – 18.49m	57' 5" – 60' 8"	£137.77	£104.75	£35.30	£19.35	£62.85	£21.18	£11.61
18.50 – 19.49m	60' 9" – 63' 11"	£144.61	£108.17	£36.43	£21.63	£64.90	£21.86	£12.98
19.50 – 20.49m	64' 0" – 67' 2"	£149.17	£111.58	£37.57	£22.77	£66.95	£22.54	£13.66
20.50 – 21.49m	67' 3" – 70' 6"	£153.71	£115.00	£38.71	£22.77	£69.00	£23.23	£13.66
21.50 – 22.49m	70' 7" – 73' 9"	£158.27	£118.42	£39.85	£25.05	£71.05	£23.91	£15.03
Portable unpowered* (see below)		£23.91	£17.08	£10.24	£3.42	£10.25	£6.14	£2.05

*The price for all other unpowered craft is the same as for powered boats. Refunds are not available.

'Portable' means that the Boat's normal crew can, without mechanical help, launch the Boat and take it out of the water. Examples are rowing boats, dinghies, canoes or light inflatable craft.

DISCOUNTS

If you have a current three, six or twelve month British Waterways River Only Licence, you are entitled to a 50% discount on a Short Term Canal Licence, which is valid for the same period. Discounts for clubs licensing more than ten unpowered craft are subject to the local BW manager's discretion.

Scottish Licence Holder: 10% discount if the Boat has a licence issued by British Waterways Scotland which is valid for the same period. Proof of this must accompany the application.

WHERE TO BUY YOUR LICENCE

- From a BW office in person
- From a canalside BW licensing agent (a list is available from the Customer Service Centre or www.britishwaterways.co.uk/licenseit)
- By telephone from the Customer Service Centre 0845 671 5530
- By post using the APPLICATION FORM

NAVIGATION RULES

- 1) The Boat Licence does not give you any priority of passage on any Waterway. You must follow the directions of our local people who may decide which boats have priority.
- 2) You are responsible for assessing whether it is safe to use the Waterway in flood or strong stream conditions. Our Waterway offices will provide information.
- 3) You must share locks up to their capacity. There is no right to the exclusive use of a lock.
- 4) Whilst your boat is on any BW waterway, you must not:
 - (a) do anything which will cause damage or nuisance to any other person or their property.
 - (b) use any electricity generator, including the Boat's engine, at any mooring along the waterway between 8pm and 8am, unless you are moored in isolation, out of earshot of other people. We do not intend this Condition to stop you moving the Boat from the mooring.
 - (c) run the Boat's engine in gear when it is moored as this can damage the waterway walls and cause a nuisance to other people.
 - (d) discharge anything into the Waterway from the Boat except unpolluted surface water that drains naturally or water from sinks or showers on board the Boat.
 - (e) obstruct the towpath or use our land for storing items from your Boat.
 - (f) take a vehicle on to our towpaths or land or park on them unless you we have already given our permission
 - (g) Exceed the speed limit. Regardless of speed, if the boat is making waves or the wash is hitting the bank, you should slow down.
The speed limit is four miles per hour on almost all waterways. There are variations, particularly for rivers, which are locally signed.
- 5) There is no general restriction on the use of locks by portable and unpowered boats. However, in the interest of safety and to conserve water, specific local restrictions may apply. We encourage users to carry portable boats around locks if possible. If it is not possible, we recommend using ropes to pass the Boat through the lock. It is preferable that there is nobody on board the Boat while it is in the lock. Local British Waterways instructions must always be followed.
- 6) Unpowered boats may not navigate certain tunnels. Please check locally for advice or ask us for the national list of tunnels. Where you are permitted to navigate, we encourage the following precautions:
 - (a) navigate in groups of between three and six craft, at least one of which must be navigated by an experienced person.
 - (b) everyone should be able to swim, should wear a life jacket, and have a waterproof torch and whistle attached to them.
 - (c) the boats must have adequate buoyancy.
 - (d) you must display a securely fixed, bright white light showing forward.
- 7) You must not crane a Boat into or out of any Waterway without our written permission, other than at a boatyard with appropriate facilities. This is to ensure compliance with the relevant lifting regulations and to ensure the safety of other waterway users.

SUMMARY OF LICENCE CONDITIONS

- 1) You must ensure that when the Boat is under way, there is always an adequate and competent crew in attendance. A copy of our Boaters' Handbook should be kept on board the Boat and drawn to the attention of all crew members and passengers
- 2) You must display the licence so that it is easily visible by our people on the bank or at locks
- 3) The licence is not refundable and not transferable between craft
- 4) The licence does not permit use of the Boat for carrying goods, or as a tug or other workboat or for any business purpose without our permission
- 5) The licence does not allow you to moor except for short periods ancillary to cruising. You must have somewhere to keep the Boat when it is not being used for cruising
- 6) You agree to comply with navigation rules, relevant Acts, Byelaws and regulations, and to follow any of our lawful directions, spoken or written (including signs)
- 7) You agree to be responsible for any damage or difficulty caused by you or the Boat because of anything you have carelessly done or not done
- 8) Once the licence has ended, unless you re-license the Boat you must remove it from our waters. If you do not, we have powers to remove it ourselves and to charge you for the costs we incur in doing this
- 9) Waterways are occasionally closed for repairs or due to emergencies. We will not rebate licence fees in respect of such closures
- 10) The licence does not allow you to tow the Boat by animal or vehicle. You need our written permission to do this.

For a full set of General Licence Conditions, go to www.britishwaterways.co.uk/licenseit or contact the customer service centre.

PERSONAL SAFETY

The Waterways that you use can be dangerous places. The safety of our users and people is very important to us and we do our best to make the system as safe as possible. Due to their historic character, it is impossible for us to adapt them to make them completely safe without ruining what we seek to conserve.

As a result, there are inherent risks for those that use them. Please ensure that there is always sufficient competent crew to minimise risks to your own and other people's safety. Ask for a free copy of our Boaters' Handbook and check for local information about the Waterways you plan to use.

BRITISH WATERWAYS OFFICES

Customer Service Centre

British Waterways
64 Clarendon Road
Watford WD17 1DA
T 0845 671 5530
E enquiries.hq@britishwaterways.co.uk

Boat Licence Team

British Waterways
PO BOX 162
LEEDS
LS9 1AX

WALES & BORDER COUNTIES WATERWAYS

British Waterways
Navigation Road
Northwich
Cheshire CW8 1BH
T 01606 723800

NORTH WEST WATERWAYS

British Waterways
Waterside House
Waterside Drive
Wigan WN3 5AZ
T 01942 405700

YORKSHIRE WATERWAYS

British Waterways
Fearn's Wharf
Neptune Street
Leeds LS9 8PB
T 0113 281 6800

WATERWAY FACILITIES

We provide a range of basic services for boaters, including water points, refuse disposal, toilets and Elsan emptying points throughout the waterway network. These are generally free to licence holders. Access to sanitary facilities is by a special Yale key, available from the Customer Service Centre.

Where showers, laundry facilities or electric charging points are available, payment is by digital card. On some waterways you need an anti-vandal key to operate structures. For more information go to www.waterscape.com/facilities

Please also see:

- ➔ Application form for a short term licence (England & Wales)
- ➔ Boat condition declaration for a short term licence

EAST MIDLANDS WATERWAYS

British Waterways
The Kiln
Mather Road
Newark NG24 1FB
T 01636 704481

SOUTH WEST WATERWAYS

British Waterways
The Dock Office
Commercial Road
Gloucester GL1 2EB
T 01452 318000

WEST MIDLANDS WATERWAYS

British Waterways
Peel's Wharf
Lichfield Street
Fazeley
Tamworth B78 3QZ
T 01827 252000

SOUTH EAST WATERWAYS

British Waterways
510 - 524 Elder House
Elder Gate
Central Milton Keynes MK9 1BW
T 01908 302500

LONDON WATERWAYS

British Waterways
1 Sheldon Square
Paddington Central
London W2 6TT
T 020 7985 7200